



Certificate of Analysis

Powered by Confident LIMS
1 of 5

Jersey Extraction Lab LLC

601 Kennedy Blvd
Somerdale, NJ 08083
paige@jerseyclouds.com
(1NN) NNN-NNNN
Lic. #M000098

Sample: 2411SRV0302.1460

Strain: Black Cherry Runtz; Sample Weight: 12 units
Batch#: 1A4110300006915000000010; Batch Size: 4922 units
Harvest Date:

Sample Received: 11/11/2024; Report Created: 11/14/2024; Report Expires: 11/14/2025

Jersey Clouds half gram disposable

Concentrates & Extracts, Vape
Harvest Process Lot: ; METRC Batch: 1A4110300006915000000010; METRC Sample: 1A4110300006915000000012



Safety

Pass Pesticides	Pass Microbials	Pass <LOD Limit: 1000 ppb Vitamin E Acetate
Pass Solvents	Pass Metals	Pass Foreign Matter Method: SOP-CHEM-007

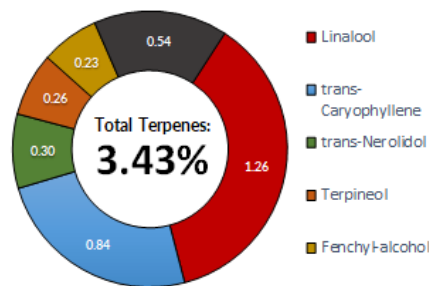
Cannabinoids, Water Activity, and % Moisture

80.43% Total THC	ND Total CBD
NT Moisture	NT Water Activity

Analyte	LOD	LOQ	Conc*	Conc*	Moisture
	%	%	%	mg/g	Corrected Conc*
THCa	0.32	0.37	ND	ND	0.00
Δ9-THC	0.28	0.30	80.43	804.3	80.43
Δ8-THC	0.30	0.59	ND	ND	0.00
THCV	0.30	0.59	ND	ND	0.00
CBDa	0.30	0.37	ND	ND	0.00
CBD	0.29	0.30	ND	ND	0.00
CBDV	0.27	0.30	ND	ND	0.00
CBN	0.29	0.30	ND	ND	0.00
CBGa	0.30	0.59	ND	ND	0.00
CBG	0.29	0.30	0.72	7.2	0.72
CBC	0.55	0.59	ND	ND	0.00
Total			81.15	811.5	

* concentrations are adjusted for dry weight according to the following formula: $100 \times (\text{conc.} / (100 - \% \text{ moisture}))$
Total THC = THCa * 0.877 + Δ9-THC
Total CBD = CBDa * 0.877 + CBD
Instrument: HPLC-DAD; Method: SOP-CHEM-001

Terpenes



	Linalool (1.25%) Aroma similar to French lavender. Common in household cleaning product and air fresheners.	Major 1
	trans-Caryophyllene (0.83%) Clove/turpentine aroma. Commonly used as flavoring agent in food. Contributes to aroma of black pepper.	Major 2
	trans-Nerolidol (0.29%) Floral aroma reminiscent of roses, citrus, and apples. It can be found in jasmine, yellow grass, ginger, and tea tree oil.	Major 3

Instrument: GC-MS; Method: SOP-CHEM-002

143 Harding Ave
Bellmawr, NJ
(484) 226-7034
http://srivenlabsnj.com
Lic# TL000004

James Anasti
Lab Director

Confident LIMS
All Rights Reserved
coa.support@confidentlims.com
(866) 506-5866
www.confidentlims.com





Certificate of Analysis

Powered by Confident LIMS
2 of 5

Jersey Extraction Lab LLC

601 Kennedy Blvd
Somerdale, NJ 08083
paige@jerseyclouds.com
(1NN) NNN-NNNN
Lic. #M000098

Sample: 2411SRV0302.1460

Strain: Black Cherry Runtz; Sample Weight: 12 units
Batch#: 1A4110300006915000000010; Batch Size: 4922 units
Harvest Date:

Sample Received: 11/11/2024; Report Created: 11/14/2024; Report Expires: 11/14/2025

Jersey Clouds half gram disposable

Concentrates & Extracts, Vape
Harvest Process Lot: ; METRC Batch: 1A4110300006915000000010; METRC Sample: 1A4110300006915000000012



Residual Solvents

Pass

Analyte	LOD	LOQ	Limit	Mass	Status
	PPM	PPM	PPM	PPM	PPM
1,1 Dichloroethene	1.842	1.842	8.000	ND	Pass
1,2-Dichloro-Ethane	0.460	0.460	2.000	ND	Pass
Acetone	172.652	172.652	750.000	ND	Pass
Acetonitrile	13.812	13.812	60.000	ND	Pass
Benzene	2.026	2.026	2.000	ND	Pass
Butanes	705.341	920.810	5000.000	ND	Pass
Chloroform	0.460	0.460	2.000	ND	Pass
Ethanol	230.203	230.203	5000.000	ND	Pass
Ethyl-Acetate	92.081	92.081	400.000	ND	Pass
Ethyl-Ether	115.101	115.101	500.000	ND	Pass
Ethylene Oxide	1.151	2.878	5.000	ND	Pass
Heptanes	58.011	103.591	5000.000	ND	Pass
Hexanes	11.510	11.510	50.000	ND	Pass
Isopropanol	115.101	115.101	500.000	ND	Pass
Methanol	57.551	57.551	250.000	ND	Pass
Methylene-Chloride	28.775	28.775	125.000	ND	Pass
Pentane	172.652	172.652	750.000	ND	Pass
Propane	705.341	920.810	5000.000	ND	Pass
Toluene	8.471	31.077	890.000	ND	Pass
Trichloroethene	5.755	5.755	25.000	ND	Pass
Xylenes	34.530	62.155	2170.000	ND	Pass

Instrument: HS-GC-MS; Method: SOP-CHEM-003

Microbials

Pass

Analyte	LOQ	Limit	Mass	Status
	CFU/g	CFU/g	CFU/g	
Aerobic Bacteria	100	100000	<LOQ	Pass
Aspergillus		1	NR	NT
STEC E.Coli		1	ND	Pass
Salmonella SPP		1	ND	Pass
Yeast & Mold	100	10000	<LOQ	Pass

Instrument: TEMPO, PCR; Method: SOP-MICRO-001, SOP-MICRO-002

Heavy Metals

Pass

Analyte	LOD	LOQ	Limit	Mass	Status
	PPM	PPM	PPM	PPM	
Arsenic	0.12	0.20	0.4	ND	Pass
Barium				NR	NT
Cadmium	0.14	0.20	0.4	ND	Pass
Chromium	0.15	0.39	0.6	ND	Pass
Lead	0.07	0.20	1.0	ND	Pass
Mercury	0.12	0.13	0.2	ND	Pass
Selenium				NR	NT
Silver				NR	NT

Instrument: ICP-MS; Method: SOP-CHEM-004

143 Harding Ave
Bellmawr, NJ
(484) 226-7034
http://srivenlabsnj.com
Lic# TL000004

James Anasti
Lab Director

Confident LIMS
All Rights Reserved
coa.support@confidentlims.com
(866) 506-5866
www.confidentlims.com





Certificate of Analysis

Powered by Confident LIMS
3 of 5

Jersey Extraction Lab LLC

601 Kennedy Blvd
Somerdale, NJ 08083
paige@jerseyclouds.com
(1NN) NNN-NNNN
Lic. #M000098

Sample: 2411SRV0302.1460

Strain: Black Cherry Runtz; Sample Weight: 12 units
Batch#: 1A411030000691500000010; Batch Size: 4922 units
Harvest Date:

Sample Received: 11/11/2024; Report Created: 11/14/2024; Report Expires: 11/14/2025

Jersey Clouds half gram disposable

Concentrates & Extracts, Vape
Harvest Process Lot: ; METRC Batch: 1A411030000691500000010; METRC Sample: 1A411030000691500000012



Terpenes

Analyte	LOD	LOQ	Mass
	%	%	%
Linalool	0.04	0.06	1.26
β-Caryophyllene	0.04	0.06	0.84
Nerolidol		0.06	0.30
Terpineol	0.03	0.04	0.26
Fenchol	0.02	0.06	0.23
α-Humulene	0.04	0.06	0.21
Valencene	0.04	0.06	0.16
Geranyl Acetate	0.04	0.06	0.09
α-Cedrene	0.02	0.06	0.08
3-Carene	0.02	0.06	<0.06
α-Bisabolol	0.04	0.06	<0.06
α-Pinene	0.03	0.06	<0.06
α-Terpinene	0.02	0.06	<0.06
β-Myrcene	0.02	0.06	<0.06
β-Phellandrene	0.03	0.06	<0.06
β-Pinene	0.02	0.06	<0.06
Borneol	0.03	0.11	<0.11
Camphene	0.02	0.06	<0.06
Camphor	0.02	0.17	<0.17
Caryophyllene Oxide	0.03	0.06	<0.06
Cedrol	0.05	0.06	<0.06
δ-Limonene	0.01	0.06	<0.06
Eucalyptol	0.02	0.06	<0.06
Farnesene			NT
Fenchone	0.06	0.11	<0.11
γ-Terpinene	0.02	0.06	<0.06
Geraniol	0.05	0.06	<0.06
Guaiol	0.04	0.06	<0.06
Isoborneol	0.03	0.06	<0.06
Isopulegol	0.03	0.06	<0.06
(-)-Fenchone			NT
Menthol	0.04	0.06	<0.06
Nerol	0.04	0.06	<0.06
Ocimene	0.03	0.06	<0.06
Phytol			NT
Pulegone	0.02	0.06	<0.06
Sabinene	0.02	0.06	<0.06
Sabinene Hydrate	0.04	0.06	<0.06
Terpinolene	0.03	0.06	<0.06
Total			3.42

Instrument: GC-MS; Method: SOP-CHEM-002

143 Harding Ave
Bellmawr, NJ
(484) 226-7034
http://srivenlabsnj.com
Lic# TL000004

James Anasti
Lab Director

Confident LIMS
All Rights Reserved
coa.support@confidentlims.com
(866) 506-5866
www.confidentlims.com





Certificate of Analysis

Powered by Confident LIMS
4 of 5

Jersey Extraction Lab LLC

601 Kennedy Blvd
Somerdale, NJ 08083
paige@jerseyclouds.com
(1NN) NNN-NNNN
Lic. #M000098

Sample: 2411SRV0302.1460

Strain: Black Cherry Runtz; Sample Weight: 12 units
Batch#: 1A4110300006915000000010; Batch Size: 4922 units
Harvest Date:

Sample Received: 11/11/2024; Report Created: 11/14/2024; Report Expires: 11/14/2025

Jersey Clouds half gram disposable

Concentrates & Extracts, Vape
Harvest Process Lot: ; METRC Batch: 1A4110300006915000000010; METRC Sample: 1A4110300006915000000012



Pesticides

Pass

Analyte	LOD	LOQ	Limit	Conc.	Status	Analyte	LOD	LOQ	Limit	Conc.	Status
	PPM	PPM	PPM	PPM			PPM	PPM	PPM	PPM	
Abamectin	0.130	0.135	0.500	ND	Pass	Flurprimidol	0.035	0.067	0.200	ND	Pass
Acetamiprid	0.049	0.067	0.200	ND	Pass	Hexythiazox	0.026	0.067	1.000	ND	Pass
Aldicarb	0.048	0.067	0.400	ND	Pass	Imazalil	0.035	0.067	0.200	ND	Pass
Ancymidol	0.035	0.067	0.200	ND	Pass	Imidacloprid	0.067	0.067	0.400	ND	Pass
Azoxystrobin	0.039	0.067	0.200	ND	Pass	Kresoxim Methyl	0.058	0.067	0.400	ND	Pass
Bifenazate	0.056	0.067	0.200	ND	Pass	Malathion	0.130	0.135	0.200	ND	Pass
Bifenthrin	0.051	0.067	0.200	ND	Pass	Metalaxyl	0.044	0.067	0.200	ND	Pass
Boscalid	0.036	0.067	0.400	ND	Pass	Methiocarb	0.039	0.067	0.200	ND	Pass
Carbaryl	0.049	0.067	0.200	ND	Pass	Methomyl	0.057	0.067	0.400	ND	Pass
Carbofuran	0.044	0.067	0.200	ND	Pass	Myclobutanil	0.039	0.067	0.200	ND	Pass
Chlorantraniliprole	0.056	0.067	0.200	ND	Pass	Naled	0.085	0.135	0.500	ND	Pass
Chlorpyrifos	0.060	0.067	0.200	ND	Pass	Oxamyl	0.039	0.067	1.000	ND	Pass
Clofentezine	0.040	0.067	0.200	ND	Pass	Paclobutrazol	0.056	0.067	0.400	ND	Pass
Cyfluthrin	0.310	0.540	1.000	ND	Pass	Permethrins	0.066	0.067	0.500	ND	Pass
Daminozide	0.160	0.270	1.000	ND	Pass	Phosmet	0.058	0.067	0.200	ND	Pass
Diazinon	0.039	0.067	0.200	ND	Pass	Piperonyl Butoxide	0.070	0.135	1.000	ND	Pass
Dichlorvos	0.062	0.067	0.100	ND	Pass	Propiconazole	0.044	0.067	0.400	ND	Pass
Dimethoate	0.036	0.067	0.200	ND	Pass	Pyrethrins	0.053	0.067	1.000	ND	Pass
Ethephon	0.035	0.067	1.000	ND	Pass	Spinosad	0.014	0.067	0.200	ND	Pass
Etoxazole	0.058	0.067	0.200	ND	Pass	Spiromesifen	0.033	0.067	0.200	ND	Pass
Fenpyroximate	0.043	0.067	0.500	ND	Pass	Spirotetramat	0.054	0.067	0.200	ND	Pass
Fipronil	0.137	0.270	0.400	ND	Pass	Thiacloprid	0.041	0.067	0.200	ND	Pass
Fonicamid	0.063	0.067	1.000	ND	Pass	Thiamethoxam	0.038	0.067	0.200	ND	Pass
Fludioxonil	0.077	0.135	0.400	ND	Pass	Trifloxystrobin	0.048	0.067	0.200	ND	Pass

Instrument: LC-MS/MS; Method: SOP-CHEM-005

Mycotoxins

Pass

Analyte	LOD	LOQ	Limit	Conc.	Status
	PPM	PPM	PPM	PPM	
Total Aflatoxins		0.01	0.02	ND	Pass
Aflatoxin B1	0.01	0.01	0.02	ND	Pass
Aflatoxin B2	0.00	0.01	0.02	ND	Pass
Aflatoxin G1	0.00	0.01	0.02	ND	Pass
Aflatoxin G2	0.00	0.01	0.02	ND	Pass
Ochratoxin A	0.01	0.01	0.02	ND	Pass

Instrument: LC-MS/MS; Method: SOP-CHEM-005

143 Harding Ave
Bellmawr, NJ
(484) 226-7034
http://srivenlabsnj.com
Lic# TL000004

James Anasti
Lab Director

Confident LIMS
All Rights Reserved
coa.support@confidentlims.com
(866) 506-5866
www.confidentlims.com



ND=Not Detected, NR=Not Reported, LOD=Limit of Detection, LOQ=Limit of Quantitation. This product has been tested by Sriven Lab, LLC, using valid testing methodologies and a quality system as required by state law. Values reported relate only to the product tested and batched under the batch number identified above. Sriven Lab, LLC makes no claims as to the efficacy, safety, or other risks associated with any detected or non-detected level of any compounds reported herein. This Certificate must not be altered, and shall not be reproduced except in full, without the written approval of Sriven Lab, LLC.



Certificate of Analysis

Powered by Confident LIMS
5 of 5

Jersey Extraction Lab LLC

601 Kennedy Blvd
Somerdale, NJ 08083
paige@jerseyclouds.com
(1NN) NNN-NNNN
Lic. #M000098

Sample: 2411SRV0302.1460

Strain: Black Cherry Runtz; Sample Weight: 12 units
Batch#: 1A4110300006915000000010; Batch Size: 4922 units
Harvest Date:

Sample Received: 11/11/2024; Report Created: 11/14/2024; Report Expires: 11/14/2025

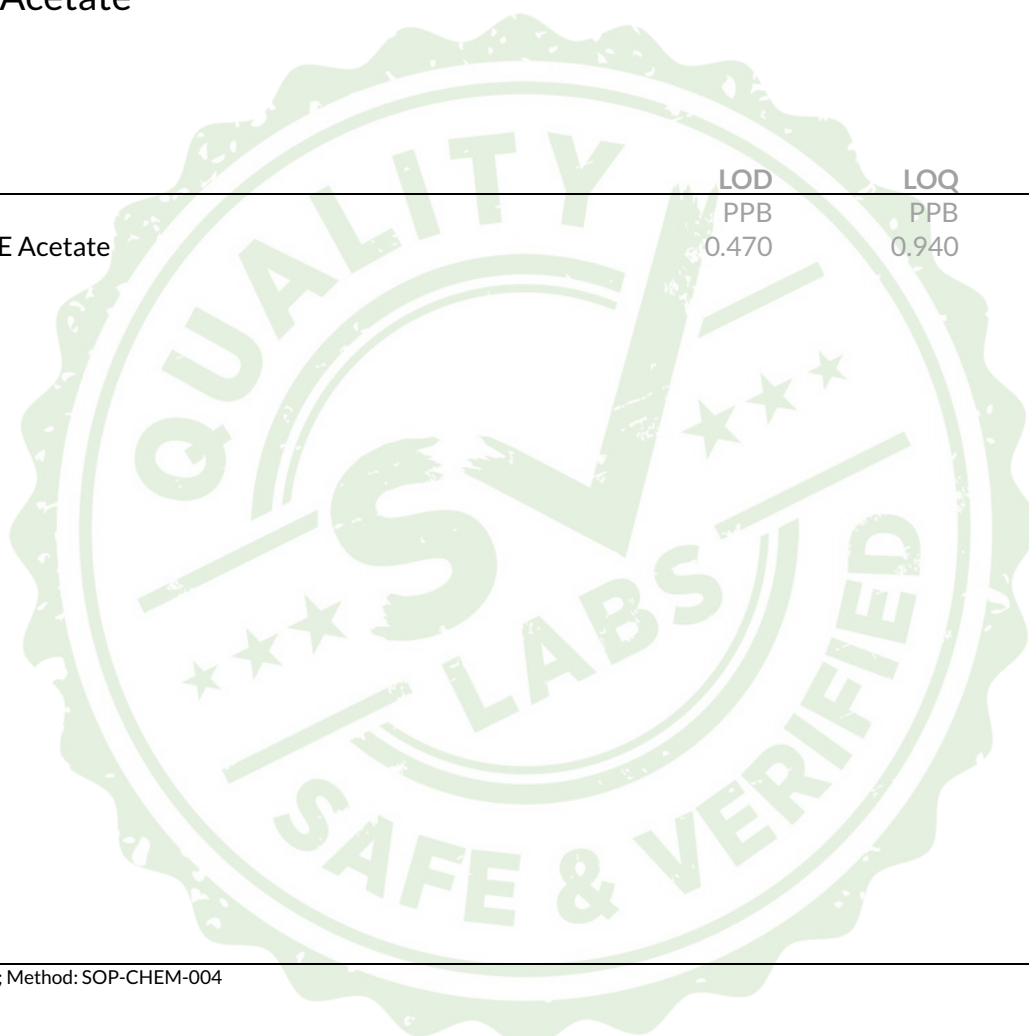
Jersey Clouds half gram disposable

Concentrates & Extracts, Vape
Harvest Process Lot: ; METRC Batch: 1A4110300006915000000010; METRC Sample: 1A4110300006915000000012



Vitamin E Acetate

Analyte	LOD	LOQ	Mass
Vitamin E Acetate	PPB 0.470	PPB 0.940	PPB ND



Instrument: ICP-MS; Method: SOP-CHEM-004

143 Harding Ave
Bellmawr, NJ
(484) 226-7034
<http://srivenlabsnj.com>
Lic# TL000004

James Anasti
Lab Director

Confident LIMS
All Rights Reserved
coa.support@confidentlims.com
(866) 506-5866
www.confidentlims.com



ND=Not Detected, NR=Not Reported, LOD=Limit of Detection, LOQ=Limit of Quantitation. This product has been tested by Sriven Lab, LLC, using valid testing methodologies and a quality system as required by state law. Values reported relate only to the product tested and batched under the batch number identified above. Sriven Lab, LLC makes no claims as to the efficacy, safety, or other risks associated with any detected or non-detected level of any compounds reported herein. This Certificate must not be altered, and shall not be reproduced except in full, without the written approval of Sriven Lab, LLC.